

CLVGROUP



Enabling businesses to enhance their capabilities and do more through creative and innovative structural products and solutions.

CLV Group of Companies

A collective of companies specializing in offering innovative solutions that improve people's lives, enable businesses to thrive, and uplift communities. Originating as a glass manufacturer, we have expanded our services, reaching into a multitude of industries while maintaining our commitment to quality and strong client relationships.

We catalyze business growth and community upliftment, envisioning a luminous and prosperous horizon for everyone with a blend of solid foundations and boundless exploration.

Clear Possibilities

Strong foundations and the freedom to explore limitless possibilities drive us to excel in our endeavors. We empower businesses and communities through our diversified range of products and services, always striving for a brighter, clearer future for all.



Table Of Content

PART I

Brand Story

Journey with us through our legacy as we narrate the inception, growth, and values that define our brand. Delve into the essence of who we are and what drives us.

PART II

Solutions

Discover our comprehensive range of offerings, tailor-made to address distinct needs. From innovative products to expert services, uncover how we cater to diverse challenges.

PART III

Opportunity

Explore the vast possibilities that lie ahead. Whether you're a potential partner or a curious observer, find out how you can be a part of our expanding vision and journey towards excellence.

PART I

Brand Story

Journey with us through our legacy as we narrate the inception, growth, and values that define our brand. Delve into the essence of who we are and what drives us.

Company Background

Origin Story

Founded in the 1970s by Mr. Chiew Eow, the CLV Group of Companies began its journey with its inaugural venture, Lien Yeu Cermin (Muar) Sdn. Bhd., a modest crafts shop specializing in glass and mirrors. Over the years, the Group has evolved and expanded, emerging as a major player in Malaysia's manufacturing industry. Today, CLV Group's influence extends beyond its pioneering role in the glass and mirror sector to serve a diverse range of markets, including both residential and commercial clients.

Our Journey

We have come a long way since our humble beginnings. In the 2000s, we reached a pivotal milestone by acquiring our first production factory at Lot 2004, Batu 3 3/4, Jalan Bakri, Kampung Parit Seri Tanjong, 84000 Muar, Johor. The shift from being a small vendor to an integrated manufacturer allowed us to broaden our capabilities, from providing raw glass to delivering value-added and processed glass solutions tailored to market needs.

Continuous Expansion

Recognizing the growing demands of the industry, we further expanded by inaugurating a state-of-the-art production facility of approximately 25,000 square feet at Lot 2806 Jalan Air Manis, Parit Jawa 84150 Muar, Johor. This expansion fortifies our position as a leading provider in our sector.

Trusted Partnerships

Over nearly five decades, our commitment to quality and innovation has earned us the trust of major retailers, corporate clients, and no importers. Their confidence in our products has not only fortified our domestic market presence but has also fueled our aspirations for global outreach.

Future Outlook

Looking to the future, CLV Group of Companies is set on becoming a global authority in product innovation, particularly with glass-based related products. Our ambition extends beyond Malaysia, as we aim to revolutionize lifestyles through an ecosystem that elevates the human experience on a global scale.

Milestones

1971

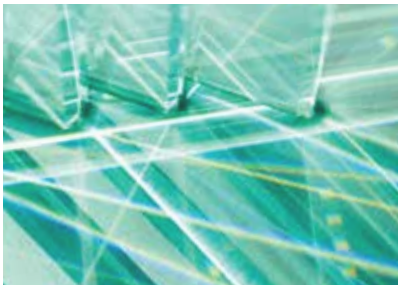
Lien Yeu Cermin's journey began, pioneering the glass and mirror industry from a quaint shop lot in Muar town, setting the foundation for greatness.

1990

Vistawood Industries took flight, specializing in crafting and exporting exceptional nursery and children's furniture, resonating with global standards.

2006

Commitment to excellence led to further expansion of our factory's footprint, accompanied by state-of-the-art machine upgrades and enhanced facilities.



2001

Marking a new era, we relocated to an expansive 60,000sqf factory, upscaling our production capabilities and infrastructure.

1988

Cheay Enterprise was established, emerging as a beacon in supplying premium furniture materials, hardware, and indispensable accessories.



2020

Our dedication was recognized as we proudly clinched the esteemed Golden Bull Award, celebrating business excellence.

2023

Pioneering innovation, we unveiled Malaysia's first Self-service Experience Hub in Kuala Lumpur, redefining customer interaction and engagement.



2021

In response to dynamic business needs, Lien Yeu Cermin transitioned into Lien Yeu Glasstech Sdn. Bhd., reflecting our expansive vision.

Honoring our business acumen and industry impact, Lien Yeu Glasstech were bestowed with the prestigious SME 100 Award.

2017

Pushing boundaries, we bolstered our production prowess, inaugurating a second 250,000sqf factory, symbolizing growth and determination.





14

Vision

To become the leading authority on product innovation across Malaysia and Southeast Asia, setting industry standards for excellence & ingenuity.

Mission

To maximize business potential that will enhance the experience and life of their end-user.

Our vision and mission statements serve as the twin pillars upon which CLV Group builds its innovative future, aiming to redefine industry standards and enrich lives across Malaysia and Southeast Asia.



15

Discover The Journey of CLV Group of Companies

An entity born from the unification of three specialized subsidiaries. From humble beginnings in the glass and mirror industry to our evolution as a major player in Malaysia's manufacturing landscape, this is where our story unfolds.



The management team at CLV Group is an assemblage of seasoned professionals whose collective expertise shapes the trajectory of our multi-faceted organization.

Meet The Architects of Our Vision

Chew Jeok Tiong, Desmond (Left 2)

Serving as the Managing Director of Lien Yeu Glasstech (M) Sdn. Bhd since 1985, he has also taken on the role of Executive Director at Cheay Enterprise. In 2022, he was appointed as one of the directors of the CLV Group of Companies.

Chew Jock Chin (Right 2)

Currently serving as the Managing Director of Cheay Enterprise and the Executive Director of Lien Yeu Glasstech (M) Sdn Bhd, he was also appointed as one of the directors of the CLV Group of Companies in 2022.

Chew Mei Leng, Ivy (Right 1)

Appointed as the Managing Director of Vistawood Industries Sdn. Bhd. in 2019, Ivy also founded Funbies Marketing that same year. Additionally, she joined the CLV Group of Companies as one of its directors in 2022.

Chew Chze Wee, Josh (Left 1)

In 2021, Josh founded CLV Glasstech (M) Sdn. Bhd. and is currently the COO of Lien Yeu Glasstech (M) Sdn. Bhd. Additionally, he assumed the role of COO for the CLV Group of Companies in 2022.

Solutions

Discover our comprehensive range of offerings, tailor-made to address distinct needs. From innovative products to expert services, uncover how we cater to diverse challenges.

Range of Services

Cheay Enterprise

Cheay Enterprise offers top-quality furniture materials, hardware, and accessories for both home and commercial projects. We ensure every product meets strict industry standards, adding strength and elegance to every furniture piece.

Lien Yeu Glasstech

Lien Yeu Glasstech specializes in glass and mirror processing, serving both residential and commercial sectors. From architectural glass for skyscrapers to intricately designed mirrors for interior décor, Lien Yeu Glasstech marries artistry with technology to create products that are as durable as they are beautiful.

Vistawood Industries

Established in 2000 under the CLV Group, Vistawood specializes in designing and exporting premium nursery and children's furniture. Prioritizing sustainability and innovation, Vistawood introduced the Funbies sub-brand in 2019 for the Malaysian market. Committed to quality, safety, and functionality, both Vistawood and Funbies combine aesthetics and practicality, distinguishing their products as unique works of art.

Key Functions

Bulk Supply of Furniture Material

Sourcing and supplying wood, metals, and other raw materials.

Hardware Distribution

Offering an exhaustive range of high-quality screws, bolts, hinges, and other essential hardware.

Custom Solutions

Tailoring material and hardware solutions to meet specific client needs.

Key Functions

Architectural Glass

Supplying tempered, laminated, or custom-designed glass for construction projects.

Decorative Solutions

Offering a variety of tinted, patterned, or etched glass for interior applications.

Safety And Quality

Ensuring all glass products meet the highest safety and quality standards, including stress-testing and quality assurance processes.

Key Functions

Customizable Nursery Furniture

Offering a variety of designs and finishes that can be tailored to suit any nursery theme.

Safety First

All products undergo rigorous safety testing to ensure they meet international safety standards.

Educational Furniture

Supplying schools and educational institutes with furniture that is built to last, while fostering an ideal learning environment.



An interactive space for end-users and business owners to explore and understand our products up close. We also provide consultancy services to help clients choose the right products and services for their needs.

Key Solutions - The Experience Hub

Our experience hub is a physical space where both end-users and business owners can come to experience our products in person. The hub is designed to be interactive and engaging, with a variety of displays and demonstrations that allow people to learn about our products and how they can be used.

For end-users, the experience hub is a great way to see our products up close and personal. They can touch and feel the materials and see how the products work. Our experience hub is also a great way to learn about the latest trends in our products and how they can be used in a variety of applications. They can get ideas for their own projects and network with other business owners who have used our products.

The experience hub can create collaboration in a number of ways. First, it can provide a space for people from different backgrounds and industries to come together and learn

about glass processing. This can help to foster new ideas and partnerships.

Second, the experience hub can be used to host events and workshops that focus on specific topics related to glass processing. This can help to bring people together who share a common interest and can lead to collaboration on projects.

Third, the experience hub can be used to showcase the work of CLV Group's partners. This can help to build relationships and create opportunities for collaboration. When CLV Group provides consultancy to meet the needs of its customers, it helps them choose the right products and services, provides technical support, offers training and education, and consults on new projects. This helps customers feel that their needs are being met, which leads to increased customer satisfaction, loyalty, and profitability.



Our commitment to research and development enables us to improve product quality, boost efficiency, and develop new offerings.

Techniques / Technologies

Our dedication to research and development (R&D) stems from a genuine desire to serve our customers better. While we have much to learn, we believe that through continuous R&D, we can make incremental improvements in product quality. This commitment also helps us work more efficiently, even if it's one small step at a time. Moreover, by patiently and persistently exploring new avenues in R&D, we hope to come up with offerings that may be beneficial to our users. Our goal isn't to be the best, but to be better than we were yesterday, and to provide value where we can.

Awards & Accreditations



Beyond Just Machinery and Buildings

The facilities represent our dedication to innovation, efficiency, and the highest standards of quality. Whether it's our production lines, research labs, or storage units, each component plays a vital role in delivering the impeccable products and services our clients have come to expect from us.

Facilities



Explore our facilities for a deep dive into our cutting-edge infrastructure and equipment. From production lines to research labs, each element reinforces our dedication to innovation, efficiency & top-notch quality.



Opportunity

Explore the vast possibilities that lie ahead. Whether you're a potential partner or a curious observer, find out how you can be a part of our expanding vision and journey towards excellence.



CLV Group is open for collaboration and partnerships, with a strong focus on enabling businesses to fully utilize our products and technologies. We see a world full of potential when it comes to glass as a versatile material, and we're passionate about helping you realize that potential in your projects.

Always Welcome

For any inquiries, concerns, or to learn more about our range of innovative products and services, we're here to help. Feel free to reach out; we look forward to connecting with you.



CLV Group of Companies

@ Kota Damansara

S-03-3B, Emporis Persiaran Surian,
Seksyen 3, Taman Sains Selangor,
Kota Damansara, 47810 Petaling Jaya,
Selangor, Malaysia.

T +6019 490 7686 / +6016 508 6589

E info@clvgroup.com.my

W www.clvgroup.com.my

Lien Yeu Glasstech (M) Sdn. Bhd.

197901003352 (47632-X)

Lot 2806, Jalan Air Manis, Parit Jawa,
84150 Muar, Johor, Malaysia.

T +606 986 5252 / +606 986 5050

F +606 9865 577

E info@clvgroup.com.my

W www.lienyeu.com

Vistawood Industries Sdn. Bhd.

199101015712 (226024-H)

Lot 6004, Jalan Perindustrian 4,
Kawasan Perindustrian Bkt Bakri,
84200 Muar, Johor, Malaysia.

T +606 9864 881

F +606 9864 825

E vistawood@vistawood.com

W www.vistawood.com

